

## Information

### How to install .net 3.5 on windows

#### Notice:

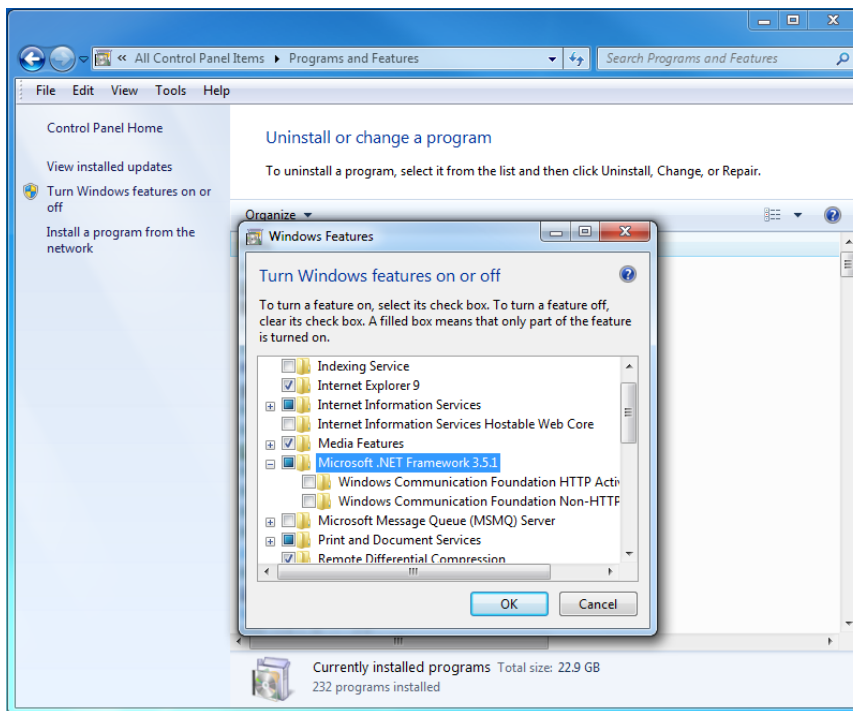
This document is only shown when .net 3.5 is not installed on your machine. In order to be able to use this product .NET 3.5 is mandatory.

#### Contents

1	Windows 7, SP1	2
2	Windows 8	3
3	Windows 8.1	4
4	Windows Server 2008 R2	5
5	Windows Server 2012	7
6	Windows 10	8

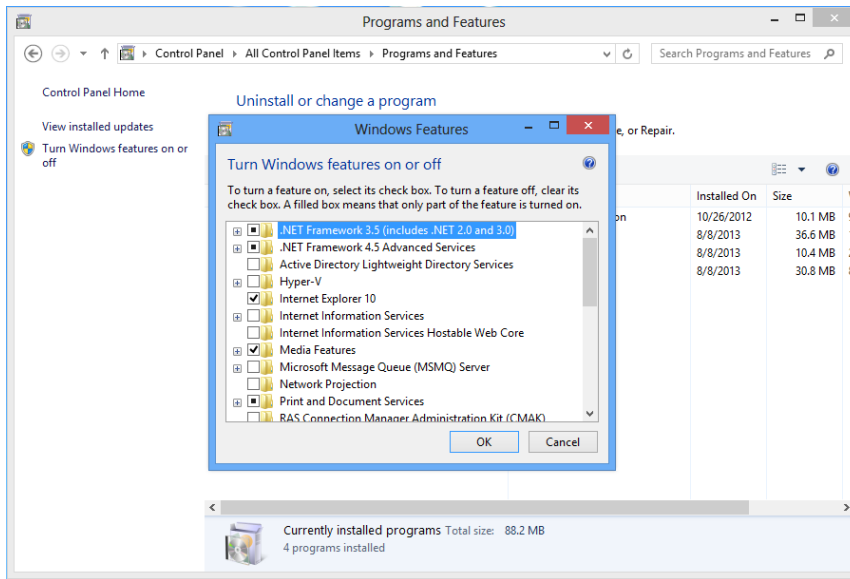
## 1 Windows 7, SP1

- Go to “Control Panel\All Control Panel Items\Programs and Features” and click on Turn Windows features on or off.
- Enable Microsoft .NET Framework 3.5.1.



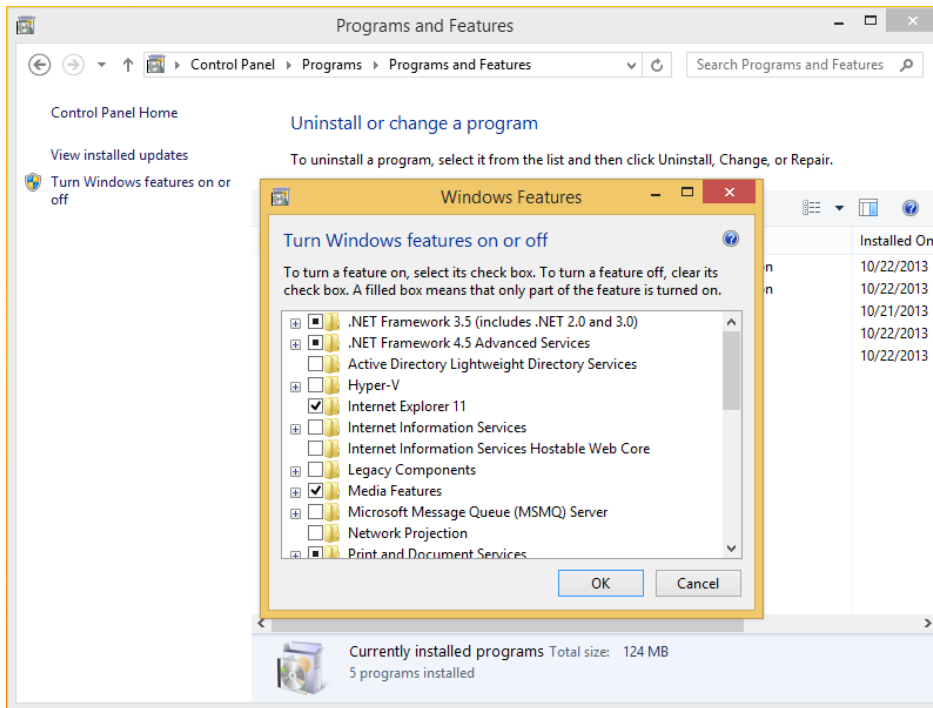
## 2 Windows 8

- Go to “Control Panel\All Control Panel Items\Programs and Features” and click on Turn Windows features on or off.
- Enable .NET Framework 3.5 (includes .NET 2.0 and 3.0)



### 3 Windows 8.1

- Go to “Control Panel\Programs\Programs and Features” and click on Turn Windows features on or off.
- Enable .NET Framework 3.5 (includes .NET 2.0 and 3.0)



## 4 Windows Server 2008 R2

### How to verify if .NET Framework 3.5 SP1 is installed:

Here are the steps to verify that .NET Framework 3.5.1 is installed on Windows Server 2008 R2.

1. Click the **Start** button in the lower left hand corner of the display.
2. Highlight **Administrative Tools** and select **Server Manager**.
3. In the **Server Manager** interface, click **Features** to display all the installed Features in the right hand pane. Verify that **.NET Framework 3.5.1** is listed.

If **.NET Framework 3.5.1** feature is not listed, you can use either of the following methods to install it:

#### Method 1: Using Server Manager Interface

1. In the Server Manager interface, select **Add Features** to displays a list of possible features.
2. In the Select Features interface, expand **.NET Framework 3.5.1 Features**.
3. Once you expand **.NET Framework 3.5.1 Features**, you will see two check boxes. One for **.NET Framework 3.5.1** and other for **WCF Activation**. Check the box next to **.NET Framework 3.5.1** and click **Next**.

Note: If you do not expand **.NET Framework 3.5.1 Features** and check it, you will get a pop-up titled **Add Features Wizard** as shown below.

Click **Cancel** and expand **.NET Framework 3.5.1 Features** and then check **.NET Framework 3.5.1** check box below it.



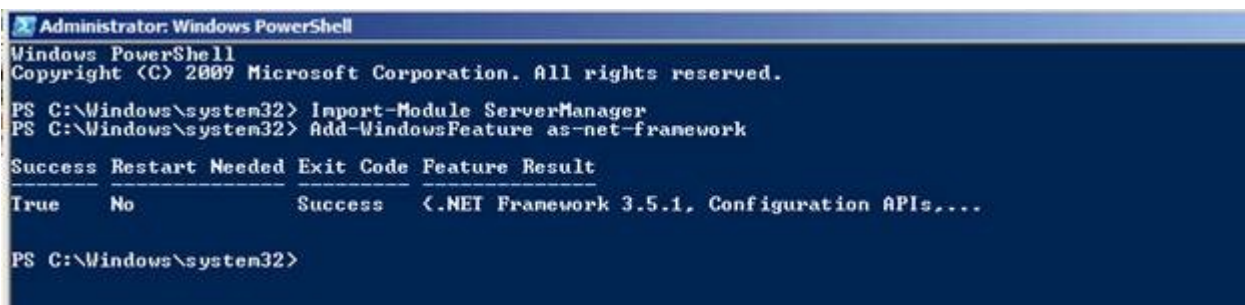
You cannot install .NET Framework 3.5.1 Features unless the required role services and features are also installed.

4. In the **Confirm Installation Selections** interface, review the selections and then click **Install**.
5. Allow the installation process to complete and then click **Close**.

## Method 2: Using PowerShell

1. Click the **Start** button in the lower left hand corner of the display.
2. Highlight **All Programs** and select **Accessories**
3. Expand Windows PowerShell and right click **Windows PowerShell** and select **Run as administrator**. Click **Yes** on the User Account Control box.
4. At the PowerShell command prompt, type the following commands, and then press ENTER after each command:
  - o **Import-Module ServerManager**
  - o **Add-WindowsFeature as-net-framework**

**Note:** A screenshot is shown below:



```
Administrator: Windows PowerShell
Windows PowerShell
Copyright (C) 2009 Microsoft Corporation. All rights reserved.

PS C:\Windows\system32> Import-Module ServerManager
PS C:\Windows\system32> Add-WindowsFeature as-net-framework

Success Restart Needed Exit Code Feature Result
-----
True      No                Success  <.NET Framework 3.5.1, Configuration APIs,...

PS C:\Windows\system32>
```

## 5 Windows Server 2012

### Enable .NET Framework 3.5 by using the Add Roles and Features Wizard

65 out of 138 rated this helpful - [Rate this topic](#)

Updated: October 20, 2013

You can use Server Manager to enable .NET Framework 3.5 for a local or remote installation of Windows Server 2012 R2.

#### Requirements

- Windows Server 2012 R2
- Installation media
- Administrator user rights. The current user must be a member of the local Administrators group to add or remove Windows features.
- Target Computers might need network access and rights to use either alternate sources or an Internet connection to use Windows Update.

#### Steps

1. In Server Manager, click **Manage** and then select **Add Roles and Features** to start the Add Roles and Features Wizard.
2. On the **Select installation type** screen, select **Role-based or feature-based installation**.
3. Select the target server.
4. On the **Select features** screen, check the box next to **.Net Framework 3.5 Features**.
5. On the **Confirm installation selections** screen, a warning will be displayed asking **Do you need to specify an alternate source path?**. If the target computer does not have access to Windows Update, click the **Specify an alternate source path** link to specify the path to the **\sources\sxs** folder on the installation media and then click **OK**. After you have specified the alternate source, or if the target computer has access to Windows Update, click the **X** next to the warning, and then click **Install**.

If you are using Server Manager in Windows Server 2012 to add a role or feature to a remote server, the remote server's computer account (DOMAIN\ComputerName\$) requires access to the alternate source file path because the deployment operation runs in the SYSTEM context on the target server.

## 6 Windows 10

- Go to "Control Panel\Programs\Programs and Features" and click on turn Windows features on or off.
- Enable .NET Framework 3.5 (includes .NET 2.0 and 3.0)

